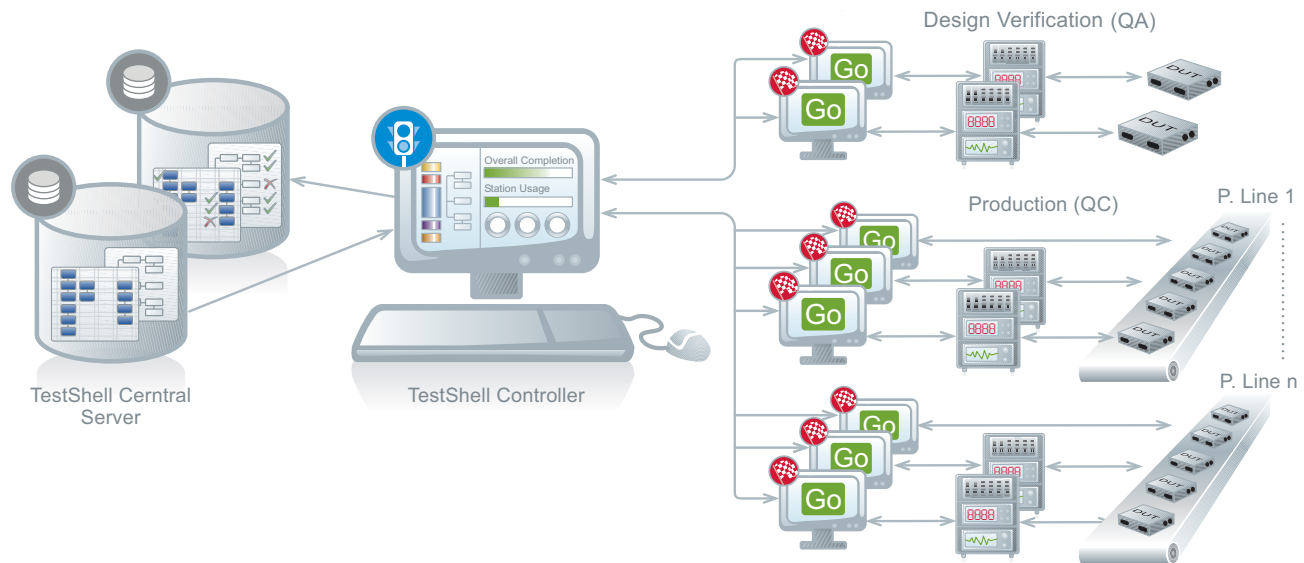


TestShell Controller

Multiple Testing Station Manager, Executor & Optimizer

TestShell Controller optimizes test duration by controlling and managing multiple stations. It schedules and coordinates tests and resources among stations, maximizes station utilization and collects all data to the TestShell central database.

The Controller is a TestShell module in the the TestShell Enterprise edition. It is also available as an optional module for the TestShell Team Edition.



- ➔ Automatically runs and co-ordinates tests on multiple stations 24/7
- ➔ Optimizes stations and resources utilization
- ➔ Schedules Tests and resources via an "Outlook-like" calendar
- ➔ Tracks and controls all test cycles in real-time
- ➔ Runs any type of TestShell test, DLL and EXE files
- ➔ Automatically aggregates and maximizes test data

Highlights

Features and Benefits

Optimize Test Management & Scheduling

- Smart, dynamic station allocation and scheduling according to:
 - Pre-defined rules and constraints
 - Specific test requirements
- Automated test cycle distribution and control across multiple stations
- Automated test execution monitoring and instant failure notification

Manage your Resources cleverly

- Distribution of tests according to resource availability
- Resource override or re-allocation based on test priority
- Virtual locking of resources (T&M equipment, Stations etc) by user-defined attributes (type, bandwidth, priority, location etc)
- Smart allocation, holding and termination of tests according to resource availability

Boost Test Execution Efficiency

- Parallel test execution
- Real-time viewing and monitoring
- Automatic alerts of test execution issues

Maximize test data analysis

- Automatic real-time aggregation of test-results data across multiple stations
- Automatic synchronization and storage of test data for full customisable reporting and analysis



Automatically run tests on multiple Stations 24/7

How it Works

TestShell Controller incorporates dedicated Modules for Test Scheduling, Planning, Execution and Reporting.

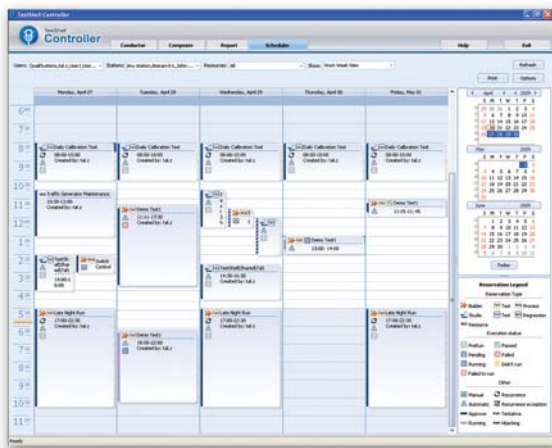
Planning Modules:

• Test Scheduling:

Controller's Scheduler module is a user-friendly "Outlook-like" calendar - an execution-planning tool in which you determine which Stations will run particular tests, set test and resource priorities or set Controller to assign tests automatically. Scheduler includes a filterable list of all stations and resources, including how and when they are allocated to specific tests, online/offline status and included/excluded status.

• Defining Test Plans

Controller allows you to configure test plans (combinations of tests run on one or more stations) including incorporating resources like TestShell tests, DLL or EXE files.



Test and resources scheduling

Test Execution and Monitoring Module

TestShell Controller displays a complete real-time log of Test Execution status - individual station, resource status and a complete event log. In case of test or station failure instant automated alerts are provided (e.g. SMS or Email), and a number of methods can be used to automatically fix the failure (like Test restarting or redirecting to another Station).

Test Reporting Modules

TestShell Controller offers a large variety of reports, including Test Reports, Execution Summary Reports and Event-Based Reports. These reports facilitate comprehensive and powerful analysis of test data.



TestShell is an end-to-end test automation solution compatible for testing virtually any hardware, device or embedded system. While providing code free **test authoring**, automatic **test execution**, and comprehensive **test reporting and analysis**, TestShell helps equipment manufacturers and service providers to improve product quality, shorten time to market and significantly reduce capital and operational expenditures.