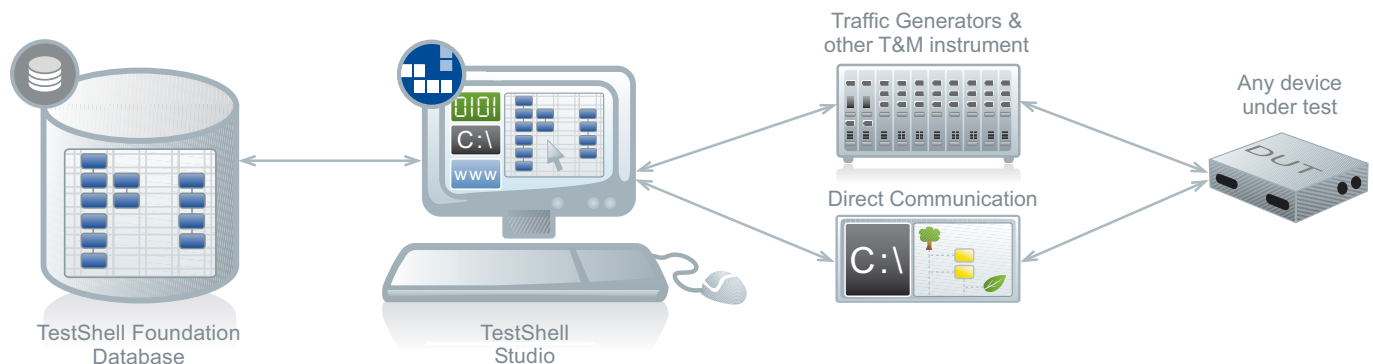




TestShell Studio

Advanced Drag-&-Drop, Multi-Sequence Test Creator

TestShell Studio is an advanced, GUI-based test editor enabling fast development of test scenarios without requiring programming skills. All technologies essential for automating today's complex testing environments are integrated in the application, enabling test creation in a fraction of the time of traditional tools.



- Drag-&-drop user interface for quick **programming-free** test sequencing
- Built-in **parallel execution** and coordination with a rendezvous support
- Simple creation of complex **event-driven** testing scenarios
- Unified test, regression and device-under-test (DUT) management in one application
- Integral support of a wide range of **network protocols**
- Built-in integration of **script languages** and **software resources** for full utilization of the existing infrastructure
- Powerful yet simple parsing and analysis rules act as building blocks for easy construction of elegant scenarios
- Networked and stand-alone test development allowing project sharing merging and version control

Highlights

Features and Benefits

Enjoy a truly user-friendly graphical software

- Complex tests may be created by test engineers without programming skills
- Learning curve is drastically cut down
- Flowchart-like display of tests allows at-a-glance comprehension
- Editing and updating of tests with minimal effort
- Saving of configurations and templates into "favorites" for quick reuse and reference

Make complex testing simple

- Coordination of parallel actions in an intuitive visual manner
- Simple event driving and linking
- Built-in logic and test-flow control tools allow easy creation of generic and reusable complex tests
- Complete marshaling of information within and between tests using a powerful variable engine
- Trivial capturing, editing and automation of terminal actions

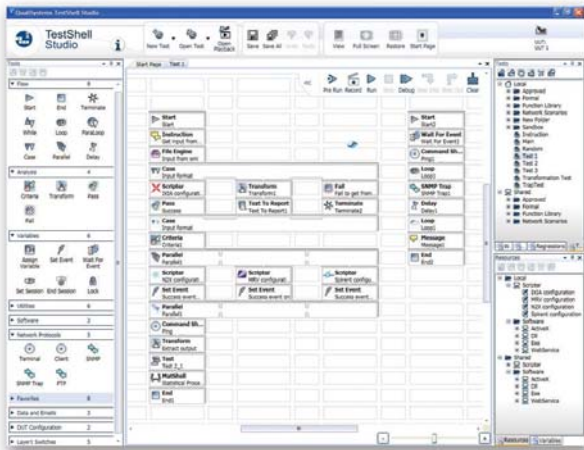


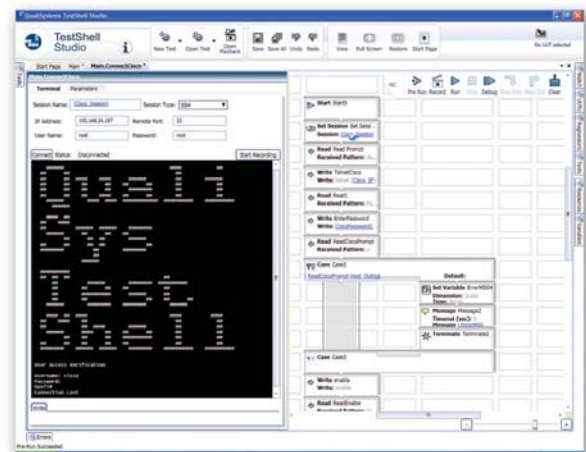
chart-like **event-driven**
test scenarios with **parallel execution**

Manage your tests and resources

- Regressions, tests and functions are stored in a central database for easy cross-organizational sharing
- All test assets are managed in a flexible hierarchy over a network environment
- Linking of regressions and tests to the DUT for tracking history and inheriting test parameters while supporting "many to many" relationships
- Loading of script libraries and software tools to the central database for immediate use by "everyone" and quick updating including resource dependencies
- Updates, edits and other changes can, by definition, affect all dependent tests and regressions

Leverage built-in support of a wide variety of technologies

- Protocols include SNMP, FTP, SFTP, TFTP, SSH, Telnet, TCP, UDP, HTTP and more...
- Scripts include TCL, Python, Perl, JavaScript, VBScript, batch file and more...
- Easy interfacing with third-party tools including sniffers, analyzers, recorders, etc.
- Control of all networking equipment from various vendors including traffic generators, switches, routers, load testers and others



Easy automation of telnet session

Collect results and analyze data

- All acquired results are loaded by definition to the central database
- Customizable reports are automatically generated
- Simple code-free parsing tools allow creation of parsing macros with immediate feedback
- Built-in mathematical and statistical tools allow quick and advanced result analysis
- Simply defined pass/fail and validations criteria with multiple conditions support
- Data collection includes actions and results allowing complete understanding and identification of errors
- Built in watchers allow tracking and debugging of all values and updates in design and execution



TestShell

TestShell is a truly user-friendly and supremely efficient system, providing an end-to-end test automation, comprehensive testing coverage and complete quality assurance requirements. TestShell solutions constitute a suite of integrated test automation applications that can be used for testing virtually any type of hardware, device, or embedded system. Each application manages and automates certain aspects of the testing process and supplies data to a unified database, turning the testing process into a complete quality optimization solution. QualiSystems' TestShell is used by leaders in industries ranging from telecommunication, cellular, aerospace and defense, consumer electronics, medical devices and others.